

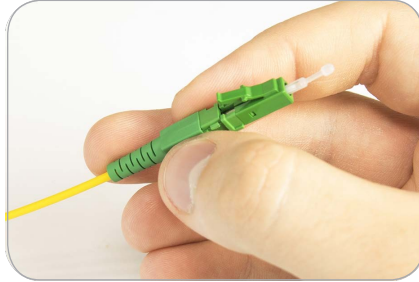
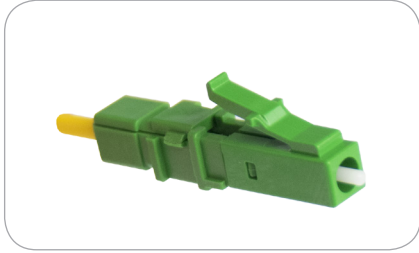
One Snap Connector LC

Features:

- LC connector with ceramic ferrule
- compliant with EN IEC 61754-4
- patented factory terminated and polished connector with no need to use optical splicer
- superior mechanical and environmental performance, designed for indoor and outdoor installation
- no tool installation system reduces time and costs
- excellent geometrical and optical parameters
- effective solution for use in microduct
- equipped with a cap for a ceramic ferrule, shaped for blowing
- the cap can be retained when installing/removing the housing, which protects the connector and keeps it clean

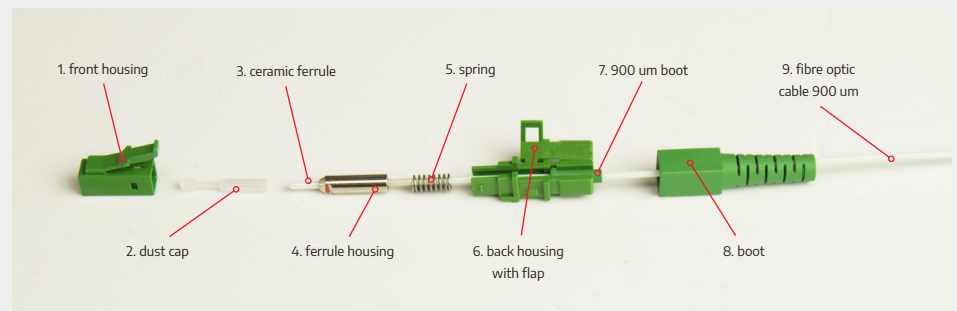
Technical specifications:

| Connector grade | Standard | Test conditions |
|---|-----------------------------|--|
| Transmission mode | SM | |
| Maximum Insertion Loss IL [dB] | 0,25 | IEC 61300-3-4 SM: A = 1310 nm/1550 nm |
| Average Insertion Loss IL [dB] | 0,15 | IEC 61300-3-4 SM: A = 1310 nm/1550 nm |
| Return Loss RL [dB] | ≥ 65 for APC ≥ 45 for PC | IEC 61300-3-6 SM: A = 1310 nm/1550 nm |
| Repeatability of IL [dB] | ±0,1 | |
| Service life | 1000 mate/demate cycles | Over service life |
| Operating temperature [°C] | from -40 to +85 | Depending on cable specification |
| Ferrule diameter [mm] | 1,25 | |
| Diameter of the connector without housing for blowing [mm] | 3 | |
| Average time to complete a connector with a housing [s] | 25 | |
| Min. force of fixing the connector on the cable on the cable 0,9 mm [N/s] | 10/5 | |
| Min. cable clamping force of the connector on the cable 2,0 mm [N/s] | 50/120 | |



— È 1 LC

One Snap Connector LC with fibre optic cable 900 um:



One Snap Connector LC with fibre optic cable 2,0 mm:

