

Patch panel for multipatchcords PS-TU-19-21/2U/24/E/SC

Features:

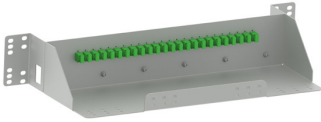
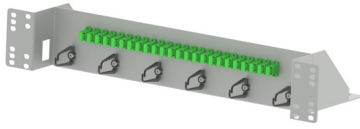
- dedicated to be used mainly in telecommunications central offices
- enables connections with multipatchcords
- designed for installation in 21" cabinet or 21" rack
- possibility to install in 19" cabinets or 19" racks

Equipment:

- 6x UT-45 cable organiser
- installation kit

Technical specifications:

	PS-TU-19-21/2U/24/E/SC
maximum number of splices	24
dimensions: width/height/depth [mm]	536x88x200
weight [kg]	2
colour	RAL 7035
housing material	powder coated steel



Patch panel for multipatchcords
 PS-TU-19-21/2U/24/E/SC