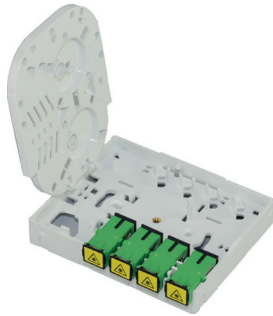


Wall-mounted fibre optic outlet NGO-24



Wall-mounted fibre optic outlet NGO-24



Open wall-mounted fibre optic outlet NGO-24

Features:

- network termination in customer's apartment
- can be used as a splice point between two cables
- cable can enter the box from rear, bottom, top, right or left hand side
- installed directly on the wall or 35 mm DIN rail mounted
- maximum capacity: 4 SC connectors and 4 splice protectors
- removable cover for easy access

Equipment:

- installation and handling instruction
- installation kit
- 4 adapters
- optionally with pigtail

Technical specifications:

	NGO-24
maximum number of splices	4
number of patching fields	4 SC*
dimensions: width/height/depth [mm]	83/100/30
housing material	ABS+PC
colour	polar white
number of cable entries	2 bottom, 1 rear, 1 top, 1 left, 1 right
environmental IP protection	IP31

* Both versions are available with standard adapters, with no shutters.

Ordering:

NGO-24 – wall-mounted fibre optic outlet