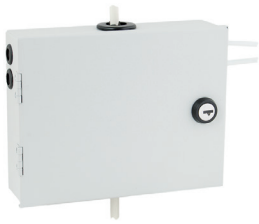
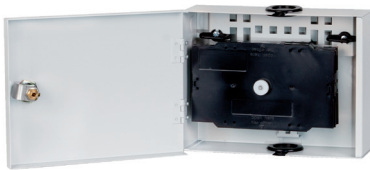


# Shaft splice box <sup>MP</sup>



Shaft splice box MP-16D



Shaft splice box MP-24

## Features:

- intended for branching fibres from vertical cable in multi-dwelling buildings
- equipped with cable entries enabling for mounting the splice box on previously installed vertical cable
- possibility of installation within 26 mm diameter ducting system
- enables up to 12 optical fibre splices
- two cable entries for customer cables on each side of the box
- lockable

## Equipment:

- splice tray for 12 splices
- cable entries
- cable ties and brackets
- installation and handling instruction
- installation kit

## Technical specifications:

	MP-16/12	MP-16D	MP-24	MP-36
number of splices	12	12	24	36
number of splice trays KSQ	1	1	2	3
total spare length of 0.9 mm buffered fibre or compact tube [m]	3	20	36	54
number of vertical cable/ducts entries for ø26 mm tubes	6	1 on top and bottom wall each		
number of horizontal cable/ducts entries for ø16 mm tubes	4	2 on each of side walls		
maximum diameter of vertical cable entering splice box [mm]	12	18		
dimensions: width/height/depth [mm]	200/150/50	200/150/50	200/150/58	200/150/70
weight [kg]	1			
colour	RAL 7035			
housing material	powder coated steel sheet			
mechanical IK protection	IK10			
environmental IP protection	IP41			

## Ordering:

MP-16D - FTTH wall-mounted splice box of 12 optical fibre splices capacity