

# Fibre optic distribution box PST-DIN-12/\*\*

## Features:

- suitable for installation on 35 mm DIN rails
- easy installation in telecom and electricity cabinets
- capacity up to 24 splices from 2 fibre optic cables (with additional splice protector holders installed)
- vertical or horizontal installation
- hinged opening door on the side wall enables easy access to the inside of the box

## Equipment:

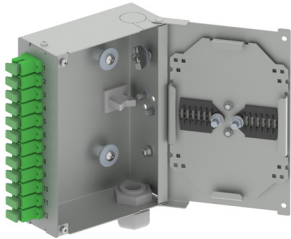
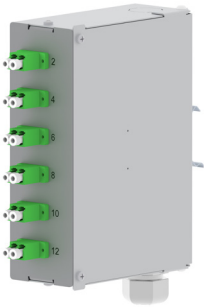
- DIN rail installation kit

## Additional equipment:

- splice protector holders

## Technical specifications:

	PST-DIN-12/**
maximum number of splices	24
number of patching fields	12 or 24
connector standard	E-2000, SC, LC, ST
recommended pigtail length [m], 0.9 mm buffered fibre	1,5
number of cable inputs/outputs	2
maximum diameter of entering cable [mm]	12
dimensions width/height/depth [mm]	48/150/107
weight [kg]	0,6
housing material/colour	steel/RAL 7035
mechanical IK protection	IK 08
environmental IP protection	IP20



Fibre optic distribution box PST-DIN-12/\*\*