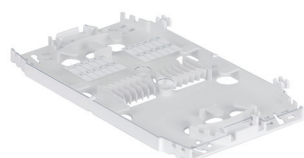


KS-Q



KS-24

Splice trays

Features:

- provide mechanical protection for 12 to 24 splices
- used in fibre optic equipment for organisation of fibre optic splices
- accept passive optical devices e.g. splitters, couplers
- plastic splice trays
- FSP-45 splice protectors recommended for KS-Q splice trays
- OS-60 splice protectors recommended for KS-24 splice trays

The set includes:

- splice tray cover
- cable bands and cable ties

Additional equipment:

- splice protectors FSP-45 and OS-60
- designator fiber OZRWL
- designator close tube OZNL

Technical specifications:

	KS-Q	KS-24
number of splices	24	24
applications	MPS-19/12, MPS-19/12/VW, PSH-3, PS-8	PS-3, PS-5, PS-4, PS-19, PSH-2, PSH-3/24, MK-5, BPK-19/72, MUF-1, MUF-2, PSS-3, PSS-4
dimensions: width/height/depth [mm]	155/92/8	200/115/10
splice protectors	FSP-45	OS-60

Ordering:

KS-24 - splice tray for 24 splices