

PSU-1 (VER. 600 MM) CENTRAL OFFICE CABINET

FEATURES:

- cabinet depth 600 mm, dedicated for installation in telecommunication central offices with limited space and high number of cables and connectors
- provides 2304 fibre terminations in two hinged module mounting frames (left and right)
- accepts left and right modules MPK-48-L-35, MPK-48-P-35, MPK-72-L-35, MPK-72-P-35
- minimises initial installation expenditures thanks to the modular construction with MPK modules
- easy and convenient devided access to outdoor cable management section and adapter plate, key locked module mounting frames
- high capacity, ease of installation and efficient fibre management
- top and/or bottom outdoor cable or multipatchcord brush entries
- key locked double door with perspex window panes
- patchcord excess length management section
- stable and rigid construction
- ability to install MPPPO modules in the LGX system using PPO-48, PPO-72 frames

THE SET INCLUDES:

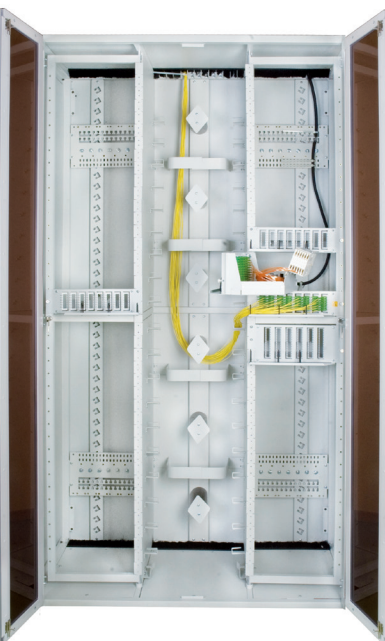
- one or two module mounting frames
- front door
- splittable protective tube
- cable band
- installation and handling instructions
- installation kit
- fibre manifolds R-01C

ADDITIONAL EQUIPMENT:

- modules MPK-48-L, MPK-48-P
- modules MPK-72-L, MPK-72-P
- patchcord excess length storage module MZK-L-60
- patchcord excess length storage module MZK-P-60
- blank plate PSU-1-Z to cover unused space in the mounting frame
- PPO-48, PPO-72 frames to install MPPPO modules in LGX system



PSU-1/960/900/600/P



PSU-1/1920/1200/600/2.2

	PSU-1 /960/900/600 L or P	PSU-1 /1920/1200/600/2.2	PSU-1 /2304/1200/600/2.6
number of lateral cable management sections	1 (left or right)	2	
number of splice trays	40 x KS-24	80 x KS-24	92 x KS-24
maximum number of splices	960	2 x 960 = 1920	2 x 1152 = 2304
module type	MPK-48 or MPK-72		
number of modules	20 x MPK-48 or 12 x MPK-72 + 2 x MPK-48	40 x MPK-48 or 24 x MPK-72 + 4 x MPK-48	48 x MPK-48 or 32 x MPK-72
connector standard	E-2000, SC		
adapter capacity	960 (48 or 72 per module)	1920 (48 or 72 per module)	2304 (48 or 72 per module)
number of outdoor cable entries	26	52	52
maximum diameter of input cable [mm]	50		
dimensions: width/height/depth [mm]	900/2200/600	1200/2200/600	1200/2600/600
recommended pigtail length [m], 0.9 mm buffered fibre	1,5		
weight [kg]	130	170	200
housing material/colour	steel sheet/RAL 7035		

ORDERING:

PSU-1/1920/1200/600 - cabinet with two hinged module mounting frames, 1920 fibre termination capacity, width 1200 m, depth 600 mm

PSU-1/960/900/600L - cabinet with single hinged module mounting frame located on the left side of the cabinet, 960 fibre

