

MP SHAFT SPLICE BOX

FEATURES:

- intended for branching fibres from vertical cable in multi-dwelling buildings
- equipped with cable entries enabling for mounting the splice box on previously installed vertical cable
- possibility of installation within 26 mm diameter ducting system
- enables up to 12 optical fibre splices
- two cable entries for customer cables on each side of the box
- lockable

EQUIPMENT:

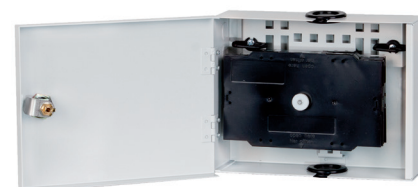
- splice tray for 12 splices
- cable entries
- cable ties and brackets
- installation and handling instruction
- installation kit

TECHNICAL SPECIFICATIONS:

	MP-16/12	MP-16D	MP-24	MP-36
number of splices	12	12	24	36
number of splice trays KSQ	1	1	2	3
total spare length of 0.9 mm buffered fibre or compact tube [m]	3	20	36	54
number of vertical cable/ducts entries for ø26 mm tubes	6	1 on top and bottom wall each		
number of horizontal cable/ducts entries for ø16 mm tubes	4	2 on each of side walls		
maximum diameter of vertical cable entering splice box [mm]	12	18		
dimensions: width/height/depth [mm]	200/150/50	200/150/50	200/150/58	200/150/70
weight [kg]	1			
colour	RAL 7035			
housing material	powder coated steel sheet			
mechanical IK protection	IK10			
environmental IP protection	IP41			



Shaft Splice Box MP-16D



MP SHAFT SPLICE BOX-24

NSP-1 WALL-MOUNTED FLOOR BOX

FEATURES:

- dedicated to make customer drop connections in multilevel units
- mountable on existing riser cable
- dedicated to ø37 mm ducts
- up to 12 splices
- 2 customer drop cable entries on side walls
- lockable

EQUIPMENT:

- cable glands opaski i taśmy kablowe
- cable ties and tapes
- protective tape
- mounting kit
- TPI table for descriptions

TECHNICAL SPECIFICATIONS:

	NSP-1
dimensions height/width/depth [mm]	206/177/60
number of KS-12 splice trays	1
maximum length of a single 0.9 mm buffered fibre stored in the box [m]	5
number of holes for rubber glands top/bottom	1/1
number of holes for rubber glands left/right	2/2
housing/equipment material	steel/ABS



NSP-1 Wall-Mounted Floor Box



NSP-1 Wall-Mounted Floor Box