

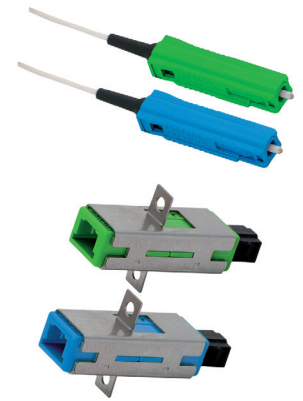
MU CONNECTORS AND ADAPTERS

FEATURES:

- small-form-factor construction, ferrule 1.25 mm
- comply with the standards: IEC 61754-6
- available in PC and APC versions, and in duplex construction

TECHNICAL

connector type	MU			test conditions
	MM PC 0°	SM PC 0°	SM APC 8°	
insertion loss IL [dB]	0,15	0,2		IEC 61300-3-4; λ=1300/1550 nm
return loss RL [dB]	40	50	70	IEC 61300-3-6; λ=1300/1550 nm
repeatability of IL [dB]	±0,1			over service life
service life	over 1000 mate/demate cycles			
operating temperature [°C]	- 40 do +85			depending on cable specification
ferrule diameter [mm]	1,25			
short code	MU	MUP	MUA	



MU connectors and adapters