

# Hybrid adapters

## Features:

- hybrid adapters are used to mate various connector standards, while keeping the angle of polishing
- the new generation of ceramic centering sleeves
- also available in male-female versions

## Technical specifications:

adapter*		E-2000	SC	FC	DIN	ST	LC
adapter - side B		SC	-	SC	SC	-	-
		FC	FC	-	FC	FC	-
		ST	ST	ST	ST	-	-
		DIN	DIN	DIN	-	DIN	MU
type		APC	APC	APC	APC	-	-
		PC	PC	PC	PC	PC	PC
alignment sleeve		ceramic					
housing colour	APC	green	green	nickel-plated bronze			green
	PC	blue	blue				blue
footprint dimensions [mm]		9,2 x 13,3	9,5 x 13,1	ø9,0	4,5 x ø5,5	7,8 x ø9,7	7,1 x 11,7
operating temperature [°C]		- 40 to + 85					

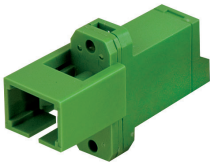
\* Other hybride adapter type available upon request.

## Ordering:

HYB.FC-SC/PC - hybrid adapter FC-SC/PC - fixing acc. FC standard  
HYB.SC-FC/APC - hybrid adapter SC-FC/APC - fixing acc. SC standard



HYB. E-2000/FC SM APC



HYB. SC/E-2000 SM APC



HYB. FC/SC SM APC



HYB. E-2000/ST SM PC



HYB. E-2000/DIN SM PC