

Fibre optic distribution box PSL/DIN

Features:

- distribution box designed for splicing
- for installation in telecommunication or electrical cabinets, directly on DIN rail (35mm width).
- possibility of mounting splice protectors inside the box
- possibility of entering cable through cable gland DP type
- made of steel covered with corrosion - resistant powder

The set includes:

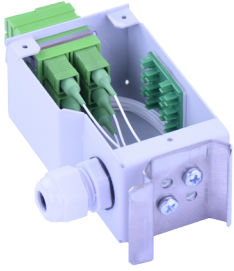
- outer housing
- splice protector holder
- cable band
- protective band for 900 um buffered fibre
- cable gland
- cable guide
- DIN rail bracket

Technical specifications:

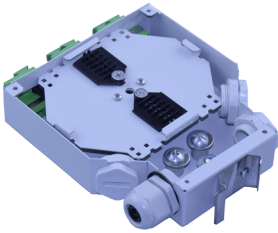
| | PSL-6/DIN | PSL-12/DIN |
|---|-----------|------------|
| maximum number of splices | 6 | 12 |
| adapter capacity | 6 | 12 |
| connector standard | SC Duplex | |
| number of cable inputs/outputs | 1 | 4 |
| maximum cable diameter [mm] | 7 | 14 |
| recommended pigtail length [m], 0,9 mm buffered fibre | 1 | 1,5 |
| dimensions: width/height/depth [mm] | 35/50/85 | 132/34/148 |

Ordering:

PSL/DIN - fibre optic distribution box for DIN rail



Fibre optic distribution box PSL-6/DIN



Fibre optic distribution box PSL-12/DIN