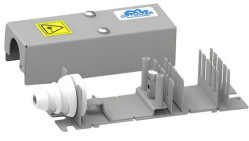
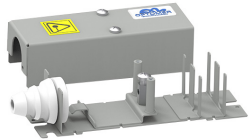


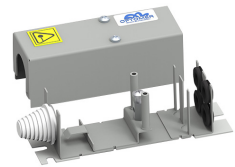
Fibre manifolds



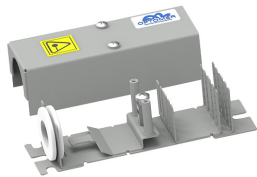
R-01A



R-01C



R-01F



R-02A

R-01A:

- accepts 12 OFBLT-P-3.1-0.5-PP protective tubes for outdoor cable fibres distribution
- organises fibres into 12 fiber bundles, that are routed in protective tubes directly to MPS-12, MPK-12 modules
- one protective tube accepts fibres from different outdoor cable loose tubes
- used to feed the required fibre count bundles to PS-19 patch panels and the modules in PSU-300 cabinets
- enables several optical distribution modules to be feeded with fibres from one fibre optic cable

R-01C:

- accepts four WOD-10B corrugated tubes as the protection for the distributed outdoor cable loose tubes
- one corrugated tube holds up to 8 outdoor cable loose tubes
- used to feed the required fibre count bundles to PS-19 patch panels and the modules in PSU-1 cabinets
- organises fibres into the required fibre count bundles, that are routed in protective tubes directly to MPK-48 and MPK-72 modules

R-01F:

- dedicated for high fibre count cables e.g. 288 fibre count cable with 6 fibre bundles, 48 fibres each
- accepts six WOD-10B corrugated tubes as the protection for the distributed outdoor cable loose tubes
- one corrugated tube holds up to 8 outdoor cable loose tubes
- used to feed the required fibre count bundles to PS-19 patch panels and the modules in PSU-1 cabinets
- organises fibres into the required fibre count bundles, that are routed in protective tubes directly to MPK-48 and MPK-72 modules

R-02A:

- accomodates 24 x OFBLT-P-3.1-0.5-PP protective tubes used for outdoor cable fibre distribution
- groups outdoor cable fibres into 12-fiber bundles in protective tubes in MPS-12 and MPK-12 modules
- fibres from different outdoor cable loose tubes can be insetred into one protective tube
- used to feed the required fibre count bundles to PS-19 patch panels and the modules in PSU-300 cabinets
- enables several optical distribution modules to be feeded with fibres from one fibre optic cable

R-07:

- hermetic cable gland for 5/8" threaded cable entry
- distribution of outdoor cable fibres inside a cabinet
- used in CATV cabinets

Technical specifications:

	R-01A	R-01C	R-01F	R-02A	R-07	R-06
number of cable entries	1 outdoor cable					2 tubes
outdoor cable outer diameter [mm]	8-16			16-21	5-10	4
maximum number of outgoing tubes	12	4	6	24	12	6
dimensions: width/height/depth [mm]	45/150/34		44/150/44	44/150/37	25/90	9/55/14
weight [kg]	0,2					0,02
mounting brackets position	3 x MS screws				5/8"	clip

Ordering:

R-01A - fibre manifold for 12 protective tubes