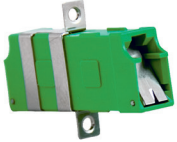


F-3000 PS DIAMOND connectors and adapters



F-3000 PS DIAMOND connectors and adapters

Features:

- assembled according to Active Core Alignment technology
- small-form-factor construction, ferrule 1.25 mm
- provide the highest transmission and operating parameters
- comply with the standards: EN60825-1, EN60825-2 (eye protection), IEC61754-20, ZN-05/TP S.A.-044
- available in PC and APC versions, and in duplex construction
- fully LC standard compatible

Technical specifications:

connector type	F-3000 DIAMOND		F-3000 0,1dB DIAMOND		test conditions
	SM PC 0°	SM APC 8°	SM PC 0°	SM APC 8°	
insertion loss IL [dB]	0,15		max. 0,1		IEC 61300-3-4; λ=1300/1550 nm
return loss RL [dB]	50	70	50	85	IEC 61300-3-6; λ=1300/1550 nm
repeatability of IL [dB]	±0,1				over service life
service life	over 1000 mate/demate cycles				
operating temperature [°C]	- 40 to +85				depending on cable specification
ferrule diameter [mm]	1,25				
short code	F3P	F3A	F3PR	F3AR	