

Cable reserve box SZ-5

Features:

- intended for use in cable chambers and outdoors
- protects the cable against external mechanical damage, secures proper cable bending radius
- interior access protected by a key locked lid
- maximum cable diameter 18 mm
- 4 cable entries, on top and bottom wall
- possibility of inserting horizontal cables
- made of aluminum sheet

Equipment:

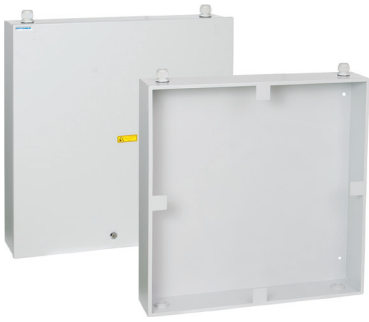
- spare length cable box
- cable ports
- port plugs
- installation kit
- lock

Technical specifications:

| | | |
|-------------------------------------|-------------------------|-----|
| | SZ-5 | |
| fixing | 4x ø10 mm 500x590 mm | |
| number of inputs/outputs of a cable | 4 | |
| dimensions width/height/depth [mm] | 635/635/140 | |
| weight [kg] | 5,4 | |
| cable capacity [m] | cable ø10 mm | 100 |
| | cable ø11 mm | 90 |
| | cable ø12 mm | 70 |
| | cable ø13 mm | 60 |
| | cable ø14 mm | 50 |
| | cable ø16 mm | 30 |
| | cable ø18 mm | 20 |
| interior access protection | lock | |
| housing material/color | aluminium/RAL 7035 | |

Ordering:

SZ-5 - cable reserve box



Cable reserve box SZ-5