

# 19" Excess cable tray SZ-19

## Features:

- dedicated for installation in 19" racks and cabinets under PS-19 patch panels
- storage and organisation of patchcord excess cable lengths
- proper space between door surface and patch panel front plates for patchcords safety
- installation in 21" and/or 23" racks with the use of AD-19 adapters
- bearing guided draw-out mechanism
- SZ-19L-1U enables the storage of outdoor cable loose tubes routed to PS-19/144 and PS-19/120 equipped with MPK-19/12 and MPK-19/12/W modules

## The set includes:

- cable organisers and cable ties
- installation and handling instructions
- installation kit

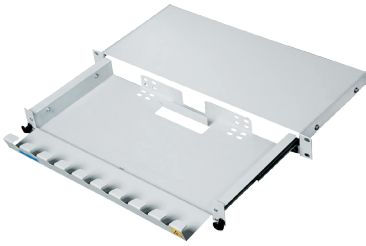
## Technical specifications:

	SZ-19/1U	SZ-19/2U	SZ-19L/1U
dimensions: width/height/depth [mm]	483/44(1U)/270	483/88(2U)/270	483/44(1U)/200
weight [kg]	2		

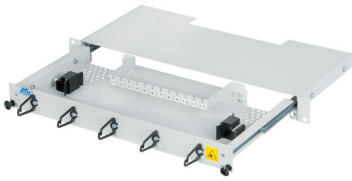
It is necessary to provide 75 mm distance between the cabinet door and 19" frame.

## Ordering:

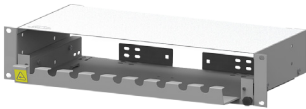
SZ-19/1U - excess cable tray



Excess cable tray SZ-19/1U



Excess cable tray SZ-19L/1U



Excess cable tray SZ-19/2U